

Places of Worship 3: Stone Set

Knox Presbyterian Church Additions and Alterations, Goderich, Ontario;
Cornerstone Architecture Inc.

Knox Presbyterian Church was designed by architect Phillip Carter Johnson in 1951 and went on to win a Massey Medal the following year. The building, located on one of the four streets that radiate from Goderich's historic square, introduced the modernist design vocabulary to this southwestern Ontario town on Lake Huron. The original structure is a composition of forms characterized by low gable roofs, gently splayed walls (originally concrete, but since with insulation and stucco added), and use of Wiarton stone from the Bruce peninsula. Johnson, based in nearby London, Ontario, often used Wiarton stone in his designs, and he also favoured multiple levels in his buildings.

The building's level changes and the problems they pose for the disabled was one of the issues that had to be dealt with in the renovations. A new accessible entrance was made to the south elevation on East Street and an elevator and bridge link were incorporated to provide consistent floors into the main church.

New construction containing administrative offices and rehearsal rooms was added to the southwest corner. Within the composition of elements (photo above), the addition's recessed entrance provides a void, and its flat canopy provides a link to the chapel, now converted into a boardroom. The juxtaposition of Wiarton stone (recycled from altered parts of the church) with white stucco reflects the language of the original structure. The stucco detailing, aluminum windows and galvanized steel channels add a new expression while remaining consistent with the building as a whole. ●

Architect team: Richard Hammond, Alison Hannay, Patrick Flannery, Tom Cook

Size: 400 m²

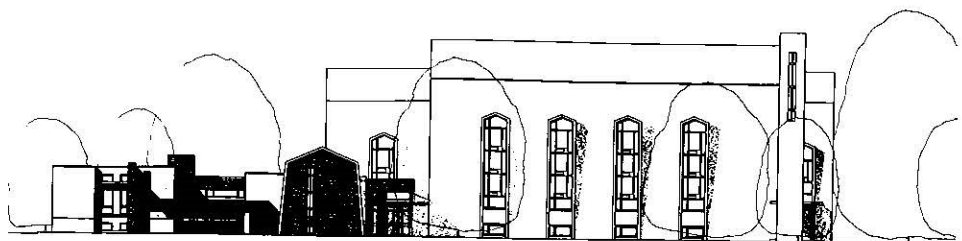
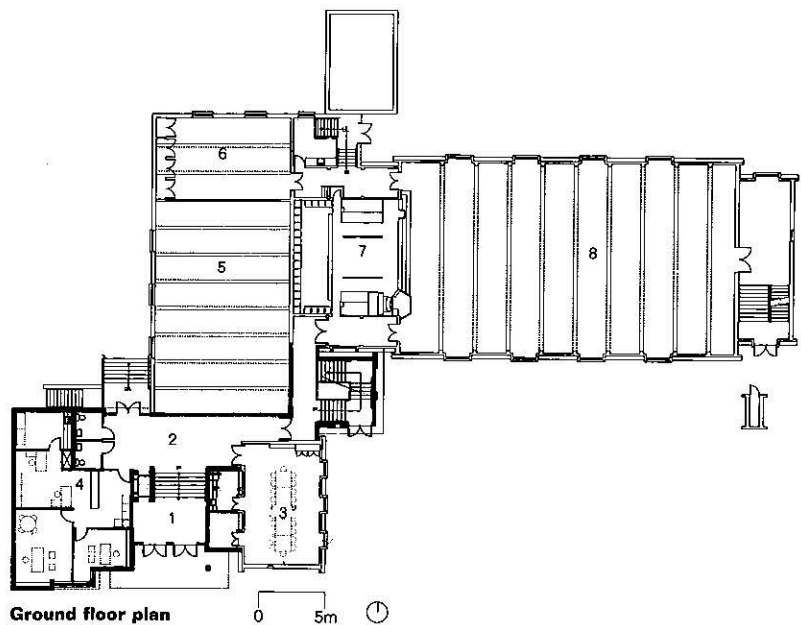
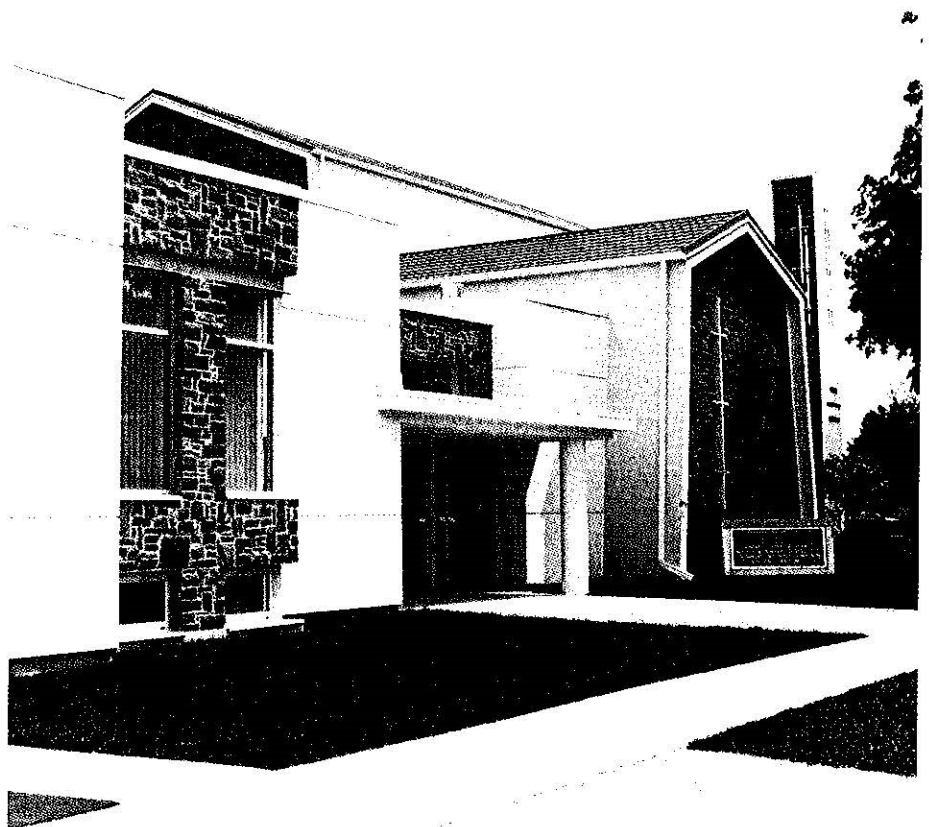
Cost: \$750,000

Completion: 1993

Photography: Michael Hannay

Ground floor plan

- | | |
|-----------------------------|---------------------|
| 1 entry | 5 open to gym below |
| 2 upper lobby | 6 youth centre |
| 3 boardroom (former chapel) | 7 chancel |
| 4 offices | 8 nave |



South elevation